



VERACITY IP TRANSMISSION  
**PRODUCT  
GUIDE**



---

[www.veracityglobal.com](http://www.veracityglobal.com)

## ETHERNET OVER COAX

### HIGHWIRE™



PRODUCT CODE **VHW-HW**

## POE OVER COAX (BASE & CAMERA)

### HIGHWIRE POWERSTAR™



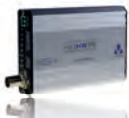
PRODUCT CODES

Base **VHW-HWPS-B**

Camera **VHW-HWPS-C**

## 2 PORT POE OVER COAX (CAMERA)

### HIGHWIRE POWERSTAR DUO™



PRODUCT CODE **VHW-HWPS-C2**

2

## HIGHWIRE

- Upgrade analogue to IP cameras - no recabling.
- Uses legacy coaxial cabling.
- Supports HD and 4K IP cameras.
- Fully transparent full-duplex 100Base-TX.
- Easy to install - no IP address or other setup.
- 500m on RG11 or up to 300m on RG59.
- 12-40V DC or 24V AC power input.
- Non POE, local power required at camera.

Unit Size L:104mm W:54mm H:24mm

## HIGHWIRE POWERSTAR

- Upgrade analogue to IP cameras - no recabling.
- Same as HIGHWIRE with POE over coax.
- POE switch powers HIGHWIRE Base unit, HIGHWIRE Camera unit and IP Camera.
- For maximum range & power Veracity's 57V DC PSU can be used as alternative to POE in.
- Up to 25W POE to IP camera with 57V DC PSU.
- SAFEVIEW™ Instant LED status confirmation.

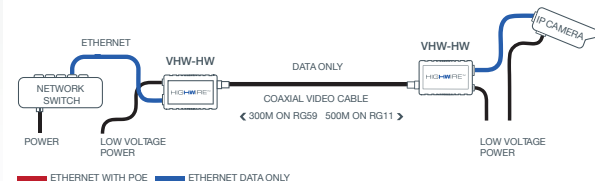
Unit Size L:104mm W:54mm H:24mm

## HIGHWIRE POWERSTAR DUO

- Replace 1 analogue camera with 2 IP cameras without recabling.
- Combines standard HIGHWIRE with two-port POE network switch.
- No configuration required.
- Pairs with HIGHWIRE Powerstar Base unit.
- POE switch can power Base, Duo & IP cameras.
- SAFEVIEW™ Instant LED status confirmation.

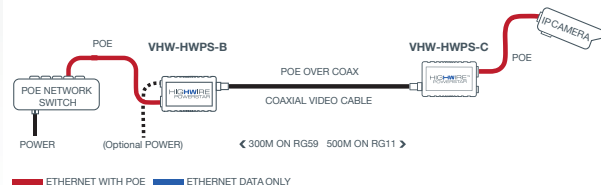
Unit Size L:132mm W:75mm H:22mm

## COAX TO 500M | ETHERNET OVER COAX



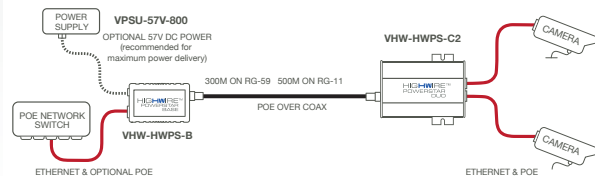
POWER SOURCES ●●

## COAX TO 500M | ETHERNET & POE OVER COAX



POWER SOURCE ●

## COAX TO 500M | ETHERNET & POE OVER COAX



POWER SOURCES ●● See Page 15 for Power Sources

## 4 PORT POE OVER COAX (CAMERA)

### HIGHWIRE POWERSTAR QUAD™



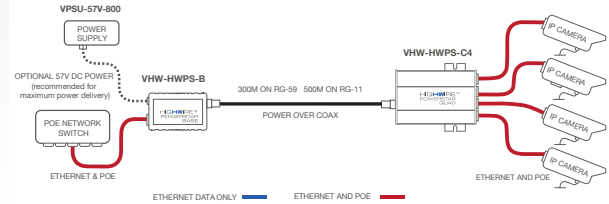
PRODUCT CODE **VHW-HWPS-C4**

## HIGHWIRE POWERSTAR QUAD

- Replace 1 analogue camera with up to 4 IP cameras without recabling.
- Supports up to 4 HD IP cameras over one coax link.
- Pairs with HIGHWIRE Powerstar Base unit.
- POE switch can power Base, Quad & IP cameras.
- SAFEVIEW™ Instant LED status confirmation.
- No configuration required.

Unit Size L:132mm W:75mm H:22mm

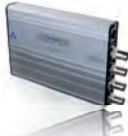
## COAX TO 500M | ETHERNET & POE OVER COAX



POWER SOURCES ● ●

## 4 PORT POE OVER COAX (BASE)

### HIGHWIRE POWERSTAR BASE 4™



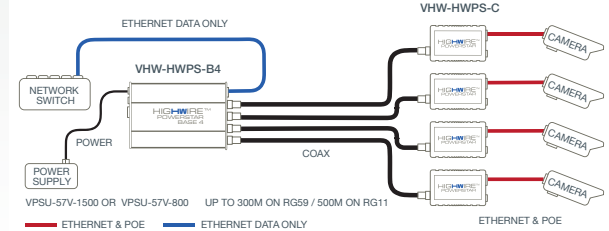
PRODUCT CODE **VHW-HWPS-B4**

## HIGHWIRE POWERSTAR BASE 4

- Replaces typical 4 channel analogue video encoders with Ethernet and POE for IP cameras.
- Ethernet and POE over coax.
- Re-uses existing coax.
- Fully automatic configuration.
- Gigabit Ethernet network uplink - SFP port for optional fibre uplink.

Unit Size L:173mm W:110mm H:22mm

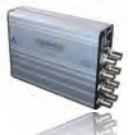
## COAX TO 500M | ETHERNET & POE OVER COAX



POWER SOURCES ● ●

## 8 PORT POE OVER COAX (BASE)

### HIGHWIRE POWERSTAR BASE 8™



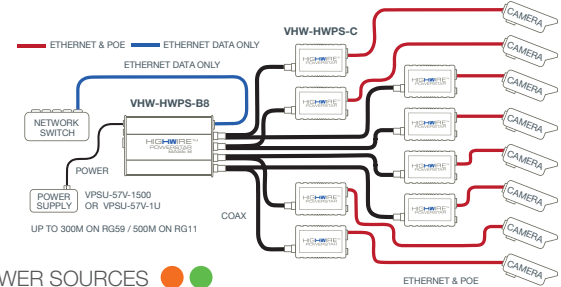
PRODUCT CODE **VHW-HWPS-B8**

## HIGHWIRE POWERSTAR BASE 8

- 8 channels per Base unit, up to 32Ch in 1U.
- Full duplex 100Base-TX on each coax link.
- Gigabit uplink port - fibre option via SFP socket.
- Only 1 main switch port needed per 8 channels.
- POE or POE Plus per channel, on all channels.
- Up to 300m on RG59, 500m on RG11.
- Automatic configuration for simple installation.

Unit Size L:173mm W:110mm H:40mm

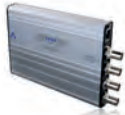
## COAX TO 500M | ETHERNET & POE OVER COAX



POWER SOURCES ● ●

## 4 PORT POE OVER COAX (BASE)

### HIGHWIRE POWERSTAR BASE 4 LINKLOCK™



PRODUCT CODE **VHW-HWPS-B4-LL**

## HIGHWIRE POWERSTAR BASE 4 LINKLOCK

- Tamper-proof Ethernet and POE over coax.
- Relay contact alarm output on tamper, with reset pins.
- Interference with cable shuts channel.
- Re-uses existing coax cabling.
- Fully automatic configuration. Simple installation.
- Gigabit Ethernet network uplink - SFP port for optional fibre uplink.

Unit Size L:173mm W:110mm H:22mm

## 8 PORT POE OVER COAX (BASE)

### HIGHWIRE POWERSTAR BASE 8 LINKLOCK™



PRODUCT CODE **VHW-HWPS-B8-LL**

## HIGHWIRE POWERSTAR BASE 8 LINKLOCK

- Tamper-proof Ethernet and POE over coax.
- 8 Tamper-proof channels per Base unit.
- Relay contact alarm output on tamper, with reset pins. Interference with cable shuts channel.
- Gigabit uplink port - fibre option via SFP socket.
- Fully automatic configuration. Simple installation.
- Full-duplex 100Base-TX on each coax.

Unit Size L:173mm W:110mm H:40mm

## LONG RANGE POE OVER COAX

### HIGHWIRE LONGSTAR™



PRODUCT CODES

Base  
Camera  
4

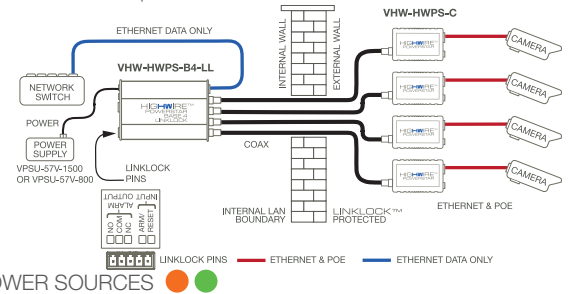
**VLS-1P-BC**  
**VLS-1P-CC**

## HIGHWIRE LONGSTAR

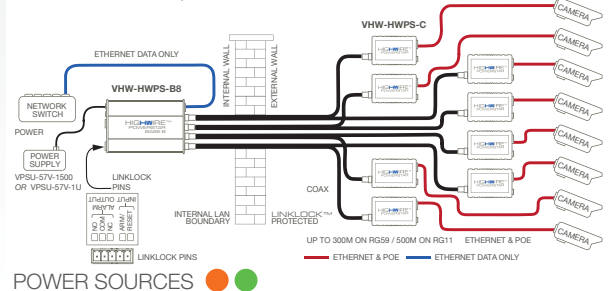
- Long range Ethernet and POE over coax cable.
- Fully automatic. Simple installation.
- Unrestricted 100Base-TX and POE over 1400m (4,600ft) on RG11.
- Ruggedised, extreme temperature range.
- BS EN 50121-4 compliant (rail and metro).
- Note: LONGSTAR is not compatible with the HIGHWIRE Powerstar range.

Unit Size L:115mm W:55mm H:27mm

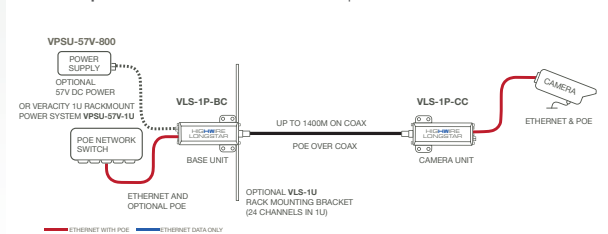
## COAX TO 500M | TAMPER-PROOF POE OVER COAX



## COAX TO 500M | TAMPER-PROOF POE OVER COAX



## CAT5/6 | 100BASE-TX TO 1400M | LAN & POE



POWER SOURCES

## LONG RANGE ETHERNET OVER COAX

### HIGHWIRE LONGSTAR LITE™



PRODUCT CODE

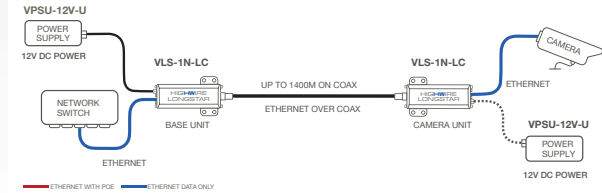
**VLS-1N-LC (Non POE)**

### HIGHWIRE LONGSTAR LITE

- Long range Ethernet over coax cable.
- Fully automatic. Simple installation.
- Unrestricted 100Base-TX over 1400m (4,600ft) on RG11.
- Ruggedised, extreme temperature range.
- BS EN 50121-4 (rail and metro compliant).
- Up to 4.2km (2.5 miles) data-only link at 10Base-T.

*Unit Size L:115mm W:55mm H:27mm*

### CAT5/6 | 100BASE-TX TO 1400M | LAN



## POE OVER COAX BUNDLE

### HIGHWIRE™ ENCODER REPLACEMENT KIT



PRODUCT CODES

**VHW-HWPS-ERK4-UK or EU or US**

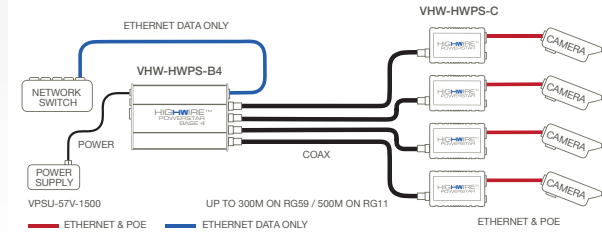
### HIGHWIRE ENCODER REPLACEMENT KIT

- Kit comes with HIGHWIRE Base 4, four HIGHWIRE Powerstar (camera) devices and a 1500mA 57V power supply and power cord.
- Fully automatic configuration.
- Replaces typical analogue video encoders with Ethernet and POE over coax re-using existing coax for IP cameras.

*Base Unit Size L:173mm W:110mm H:22mm*

### POWER SOURCES

### COAX TO 500M | ETHERNET OVER COAX



### POWER SOURCE | 57V 1500mA INCLUDED IN BUNDLE

## COMPACT POE OVER COAX (CAMERA)

### HIGHWIRE POWERSTAR BACKBOX™



PRODUCT CODE **VHW-HWPS-CBB**

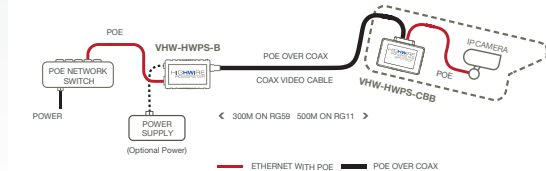
### HIGHWIRE BACKBOX

- Upgrade analogue to IP cameras - no re-cabling.
- Compact unit for inside cameras housings.
- Flexible leads - easy connection in small space.
- Reliably power POE Plus cameras up to 25W.
- SAFEVIEW™ checks connection + power status.
- Compatible with VHW-HWPS Base units.
- Full 100Base-TX Ethernet performance.

*Unit Size L:84mm W:62mm H:24mm*

*Lead Length: 150mm*

### COAX TO 500M | ETHERNET OVER COAX



### POWER SOURCE | POE POWERED

## ETHERNET & POE EXTENDER

### OUTREACH MAX™



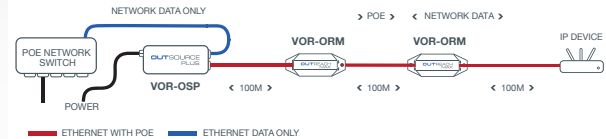
PRODUCT CODE **VOR-ORM**

#### OUTREACH MAX

- Extends Cat5/6 Ethernet by 100 metres.
- Powered by POE.
- Daisy-chain units for multiples of 100 metres.
- Easy to install, no set-up required.
- POE and POE Plus compliant (IEEE 802.3af and 802.3at).
- Handles up to 90W high-power.
- Full POE delivery at 200/300m (1unit/2units).

Unit Size L:105mm W:40mm H:22mm

#### CAT5/6 | 100M EXTENSION PER UNIT | LAN & POE



POWER SOURCE | POE POWERED

## GIGABIT ETHERNET EXTENDER

### OUTREACH LITE™



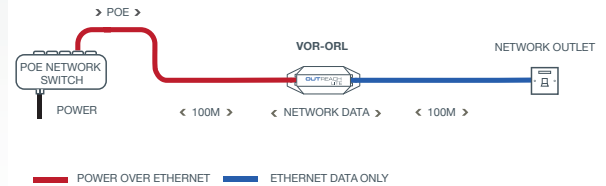
PRODUCT CODE **VOR-ORL**

#### OUTREACH LITE

- Universal Ethernet network range extender.
- Double your network range without having to install switch power cables.
- POE powered. No local power required.
- Full unrestricted network bandwidth - 10/100.
- LAN extender for non-POE devices.
- Integrated mounting holes.
- Easy to install, no set-up required.

Unit Size L:105mm W:40mm H:22mm

#### CAT5/6 | 100M EXTENSION PER UNIT | LAN



POWER SOURCE | POE POWERED

## GIGABIT ETHERNET & POE EXTENDER

### OUTREACH MAX G™



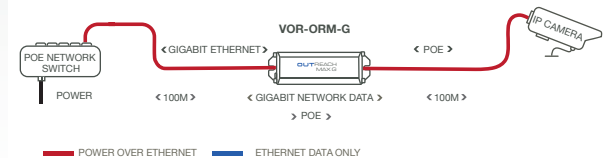
PRODUCT CODE **VOR-ORM-G**

#### OUTREACH MAX G

- Instantly doubles Gigabit Ethernet range to 200m.
- Full unrestricted Gigabit Ethernet.
- Powered by POE. No local power required.
- Easy to install, no set-up required.
- POE and POE Plus compliant (IEEE 802.3af and 802.3at and higher power 802.3bt).
- Extends POE and POE Plus up to 90W.
- Universal 10/100/1000 compatibility.

Unit Size L:119mm W:36mm H:24.5mm

#### CAT5/6 | 100M EXTENSION PER UNIT | LAN & POE



POWER SOURCE | POE POWERED

## GIGABIT ETHERNET EXTENDER

### OUTREACH LITE G™



PRODUCT CODE **VOR-ORL-G**

## EXTERIOR ETHERNET & POE EXTENDER

### OUTREACH MAX XT™



PRODUCT CODE **VOR-ORM-XT**

## EXTERIOR ETHERNET EXTENDER

### OUTREACH LITE XT™



PRODUCT CODES **VOR-ORL-XT**

## OUTREACH LITE G

- Instantly doubles Gigabit Ethernet range to 200m.
- Full unrestricted Gigabit Ethernet.
- No local power required. POE powered.
- Can be daisy chained for distances further than 200m.
- LAN extender for non-POE devices.
- Universal 10/100/1000 compatibility.
- Easy to install, no set-up. Auto configuring.

Unit Size L:119mm W:36mm H:24.5mm

## OUTREACH MAX XT

- External version of OUTREACH Max.
- Instantly doubles cable range to 200 metres.
- Tough IP66/67 Nema 4X/6P rated enclosure for external installation. Easy to fit cable seals.
- Rated -40°C to 70°C for external use.
- Compatible with POE, POE Plus and custom POE to 90 watts.

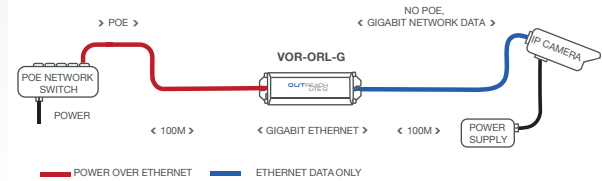
Unit Size L:183mm W:50mm H:30mm

## OUTREACH LITE XT

- External version of OUTREACH Lite.
- Instantly doubles cable range to 200 metres.
- Tough IP66/67 Nema 4X/6P rated enclosure for external installation. Easy to fit cable seals.
- Rated -40°C to 70°C for external use.
- Extends LAN to non-POE devices.
- POE powered.

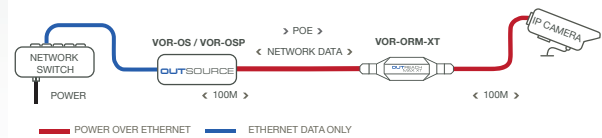
Unit Size L:183mm W:50mm H:30mm

## CAT5/6 | 100M EXTENSION PER UNIT | LAN



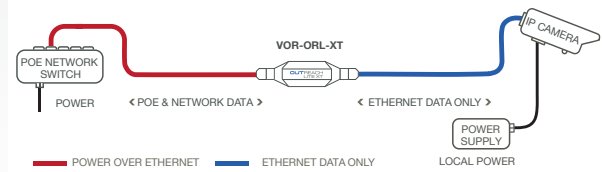
POWER SOURCE | POE POWERED

## CAT5/6 | 100M EXTENSION PER UNIT | LAN & POE



POWER SOURCE | POE POWERED

## CAT5/6 | 100M EXTENSION PER UNIT | LAN



POWER SOURCE | POE POWERED

## EXTERIOR GIGABIT & POE EXTENDER

### OUTREACH MAX GXT™



PRODUCT CODE **VOR-ORM-GXT**

## OUTREACH MAX GXT

- External Gigabit version of OUTREACH Max.
- Instantly doubles cable range to 200 metres.
- Unrestricted 10Base-T, 100Base-TX, 1000Base-T.
- Tough IP66/67 Nema 4X/6P rated enclosure for external installation. Easy to fit cable seals.
- Rated -40°C to 70°C for external use.
- Compatible with POE, POE Plus and custom POE to 90 watts.

Unit Size L:183mm W:50mm H:30mm

## EXTERIOR GIGABIT ETHERNET EXTENDER

### OUTREACH LITE GXT™



PRODUCT CODE **VOR-ORL-GXT**

## OUTREACH LITE GXT

- External Gigabit version of OUTREACH Lite.
- Instantly doubles cable range to 200 metres.
- Tough IP66/67 Nema 4X/6P rated enclosure for external installation. Easy to fit cable seals.
- Rated -40°C to 70°C for external use.
- Extends Gigabit LAN to non-POE devices.
- POE powered.

Unit Size L:183mm W:50mm H:30mm

## LONG RANGE ETHERNET & POE

### LONGSPAN™



PRODUCT CODES

Base **VLS-1P-B**  
Camera **VLS-1P-C**

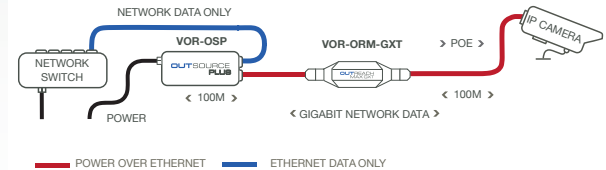
8

## LONGSPAN

- Long range, ruggedised, point-to-point Ethernet over Cat5/Cat6 adapter.
- Unrestricted 100Base-TX with POE.
- Smart power and diagnostic display for reliable and quick installation.
- 600m on Cat6 @100Mbit/s - full 25W POE Plus.
- 820m on Cat6 @100Mbit/s -15W POE delivery.
- BS EN 50121-4 (rail and metro compliant).

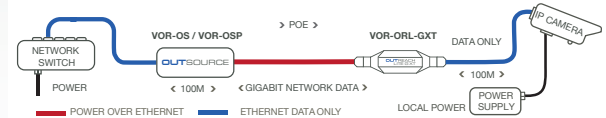
Unit Size L:120mm W:36mm H:23mm

## CAT5/6 | 100M EXTENSION PER UNIT | LAN & POE



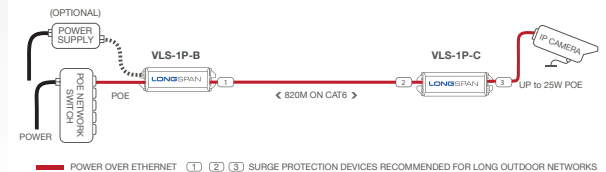
POWER SOURCE | POE POWERED

## CAT5/6 | 100M EXTENSION PER UNIT | LAN



POWER SOURCE | POE POWERED

## ETHERNET TO 820M | 1 PORT ETHERNET WITH POE



POWER SOURCES ● ●



## LONG RANGE ETHERNET

### LONGSPAN LITE™



PRODUCT CODE **VLS-1N-L**

### LONGSPAN LITE

- Same features as as LONGSPAN without POE transmission.
- Long range, ruggedised point-to-point Ethernet over Cat5/Cat6 adapter.
- Back-to-back pairs of LONGSPAN units can be used to increase the maximum distance.
- High performance over extreme temperatures.
- Fully automatic, easy to install, maintenance-free.

Unit Size L:120mm W:36mm H:23mm

## 2 PORT LONG RANGE ETHERNET & POE

### LONGSPAN™ DUO



PRODUCT CODE **VLS-2P-C**

### LONGSPAN DUO

- Long range, ruggedised, point-to-point Ethernet over Cat5/Cat6 adapter.
- Full 100Base-TX performance with POE at 820m.
- Dual POE network ports at camera side.
- Smart power and diagnostic display for reliable and quick installation.
- Fully automatic, easy install, maintenance free.
- High performance - wide range of temperatures.

Unit Size L:113mm W:75mm H:22mm

## 4 PORT LONG RANGE ETHERNET & POE

### LONGSPAN™ QUAD



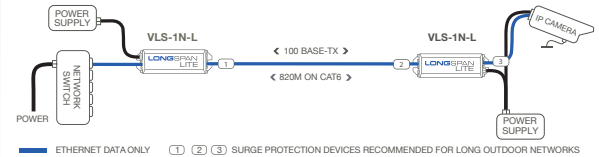
PRODUCT CODE **VLS-4P-C**

### LONGSPAN QUAD

- Long range, ruggedised, point-to-point Ethernet over Cat5/Cat6 adapter.
- Full 100Base-TX performance with POE at 820m.
- Four POE network ports at camera side.
- Smart power and diagnostic display for reliable and quick installation.
- Fully automatic, easy install, maintenance free.
- High performance - wide range of temperatures.

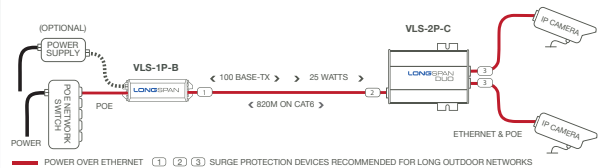
Unit Size L:113mm W:75mm H:22mm

## ETHERNET TO 820M | 1 PORT ETHERNET DATA ONLY



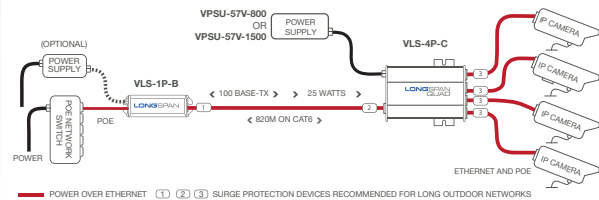
POWER SOURCES ● ●

## ETHERNET TO 820M | 2 PORT ETHERNET WITH POE



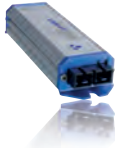
POWER SOURCES ● ●

## ETHERNET TO 820M | 4 PORT ETHERNET WITH POE



POWER SOURCES ● ●

## LIGHTSPAN™ SC100



PRODUCT CODE **VLT-SC100**

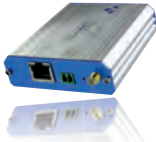
### LIGHTSPAN SC100

- Slimline, ruggedised 100Base-FX media converter.
- Fast Ethernet speeds with fibre SC connection.
- Railway EMC compliance for harsh environments with extended temperature range.
- Fully automatic, easy to install, maintenance-free.
- Versatile power input supports legacy 12V DC / 24V AC supplies.
- Fully automatic, easy to install, maintenance-free.

Unit Size L:123mm (inc brackets)  
W:36mm H:23mm

### NTP MASTER TIME SERVER

## TIMENET PRO™



PRODUCT CODE **VTN-TN-PRO**

### TIMENET PRO

- Master Network Time Protocol (NTP) clock.
- Worldwide GPS-based time reference.
- Supports Windows, Linux, MacOS and most embedded systems.
- Avoids use of internet time network ports.
- Compact, wall mountable.
- Simple browser interface.
- Also perfect for mobile/vehicle applications.

Unit Size L:87mm W:75mm H:22mm

### TIME SERVER CABLE EXTENSION

## TIMENET PRO™ EXTEND



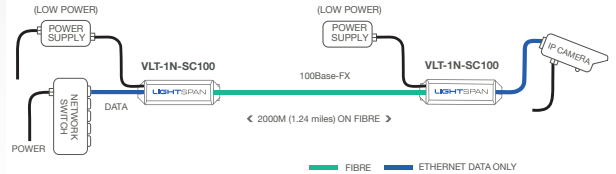
PRODUCT CODE **VTN-EXTEND**

### TIMENET PRO GPS EXTENSION CABLE

- 10m extension cable for GPS antenna connection for TIMENET Pro.
- Adds 10m to standard 5m cable on GPS antenna.
- Up to 25m using two extension cables.
- TIMENET Pro (above) includes GPS antenna.
- Enables additional flexibility in siting TIMENET Pro.

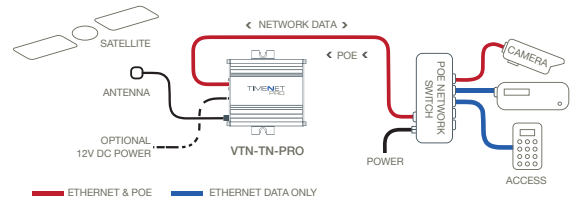
Unit Size L:10m

### CAT5/6 | ETHERNET & POE OUT



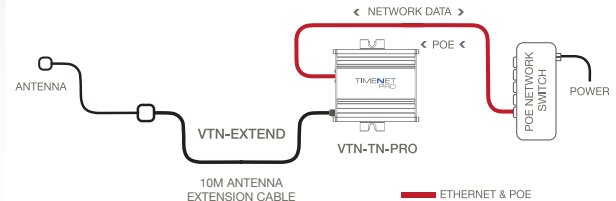
POWER SOURCES ●●

### NTP GPS | MASTER NTP TIME SERVER



POWER SOURCE ● OR POE POWERED

### NTP GPS | ANTENNA EXTENSION CABLE



## POE PLUS NETWORK SWITCH

### CAMSWITCH 4 PLUS™



PRODUCT CODE **VCS-4P1**

### CAMSWITCH 4 PLUS

- POE-powered network switch with POE+ out.
- Compact, rugged, versatile inc. wall brackets.
- 802.3af and 802.3at compliant output.
- 57V DC input option for maximum efficiency.
- 4 + 1 ports inc. 1 x POE input port (90W).
- 4 POE output ports, up to 30W per port.
- If locally powered (power budget up to 120W).
- Ideal for small IP camera installations.

Unit Size L:110mm W:64mm H:22mm

## 12V-24V POE PLUS NETWORK SWITCH

### CAMSWITCH 4 MOBILE™



PRODUCT CODE **VCS-4P1-MOB**

### CAMSWITCH 4 MOBILE

- Low voltage POE Plus switch for 12/24V applications.
- Install IP cameras, POE and network devices in transport, battery/solar powered, and other low voltage applications.
- 4+1, 10/100 Ethernet network switch with flexible 8.5V to 40V DC supply input (min start-up is 10.5V).
- 4 x POE+ 802.3af/at compliant output (POE power budget 80W).

Unit Size L:110mm W:100mm H:40mm

## 12V-24V POE PLUS NETWORK SWITCH

### CAMSWITCH 8 MOBILE™



PRODUCT CODE **VCS-8P2-MOB**

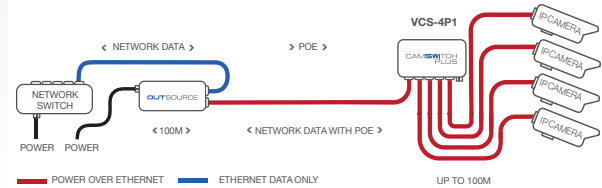
### CAMSWITCH 8 MOBILE

- Low voltage POE Plus switch for 12/24V applications.
- Install IP cameras, POE and network devices in transport, battery/solar powered, and other low voltage applications.
- 8 + 2 10/100 Ethernet network switch with flexible 8.5V to 40V DC supply input (min start-up is 10.5V).
- 8 x POE+ 802.3af/at compliant output (POE power budget 80W).

Unit Size L:110mm W:100mm H:40mm

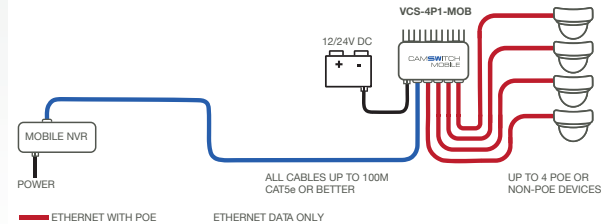
## CAT5/6 | ETHERNET & POE OUT

VERSATILE POWER INPUT - NETWORK SWITCH APPLICATION DIAGRAM



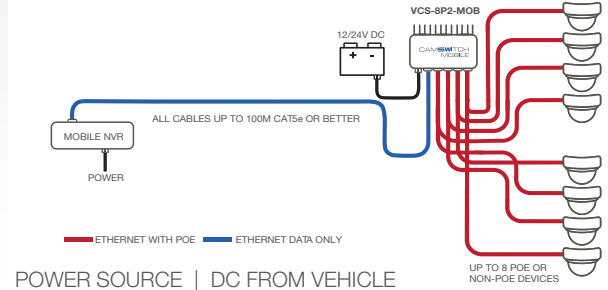
POWER SOURCES ● ● ● ●

## CAT5/6 | ETHERNET & POE OUT from 12/24V



POWER SOURCE | DC FROM VEHICLE

## CAT5/6 | ETHERNET & POE OUT from 12/24V



POWER SOURCE | DC FROM VEHICLE

## PORTABLE POE INSTALLATION TOOL

### POINTSOURCE WIRELESS™



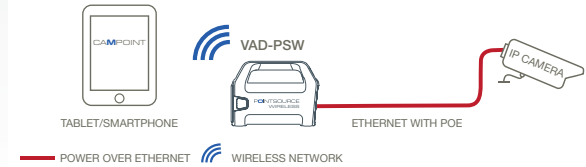
PRODUCT CODES **VAD-PSW**  
**VAD-PS-BM**

## POINTSOURCE WIRELESS

- Allows rapid adjustment, alignment, focus and field of view of IP camera, wirelessly on smart devices close to camera. Supports all classes of 802.3af and 802.3at POE devices.
- Removable, rechargeable battery with sufficient power for a day's installation work.
- Spare batteries available - rapid swap over.
- USB charging point for tablets/smartphones.

*Unit Size L:205mm W:100mm H:150mm*

## BATTERY POWERED POE INJECTOR AND WAP



## POWER SOURCE | RECHARGEABLE BATTERY

## PORTABLE POE INSTALLATION TOOL

### POINTSOURCE PLUS™



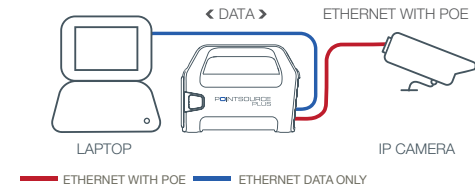
PRODUCT CODES **VAD-PSP**  
**VAD-PS-BM**

## POINTSOURCE PLUS

- Allows rapid adjustment, alignment, focus and field of view of IP camera, on devices close to camera.
- Removable, rechargeable battery with sufficient power for a day's installation work.
- Portable POE source for field use.
- Locally view IP camera on your laptop.
- Tool for installation, testing, surveys, inspections.

*Unit Size L:205mm W:100mm H:150mm*

## BATTERY POWERED POE INJECTOR



## POWER SOURCE | RECHARGEABLE BATTERY

## WIRELESS INSTALLATION TOOL

### PINPOINT WIRELESS™



PRODUCT CODE **VAD-PPW**

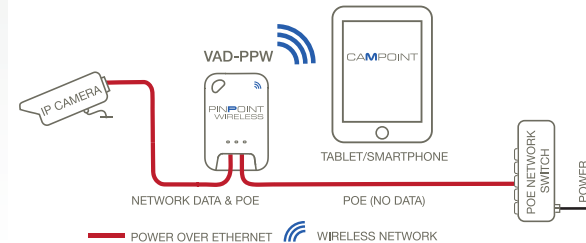
12

## PINPOINT WIRELESS

- Allows local viewing, with wireless link of IP camera images on smartphone, tablet or laptop close to camera. Enables rapid, precise adjustment of lens focus and viewing angle.
- Uses Power over Ethernet from the network - no local power is required. Uses only 2W.
- Installs in seconds – removes in seconds.
- CAMPOINT Installation App for iOS & Android.

*Unit Size L:128mm W:82mm H:28mm*

## CAT5/6 | WAP POWERED BY POE PASS THROUGH



## POWER SOURCE | POE POWERED

## CAMERA INSTALLATION TOOL

### PINPOINT™



PRODUCT CODE **VAD-PP**

### PINPOINT

- Allows local viewing of IP camera images on laptop close to camera. Enables rapid, precise adjustment of lens focus & viewing angle.
- Uses POE from network, no local power needed.
- Increases installation speed, less time on site.
- Low cost re-useable device.
- Installs in seconds - removes in seconds.

*Unit Size L:65mm W:32mm H:20mm  
Plus 1000mm Flying Lead*

## POE MIDSPAN INJECTOR

### OUTSOURCE™ PLUS



PRODUCT CODE **VOR-OSP**

### OUTSOURCE PLUS

- POE+ Midspan injector (30W).
- Delivers enhanced POE to all 802.3af/802.3at POE and POE Plus devices.
- Automatically detects compatible devices.
- Straight forward installation for high power devices. Compact, wall-mountable unit.
- Safety assured, Integrated overload protection.

*Unit Size L:163mm W:65mm H:36mm*

## POE SPLITTER

### OUTBREAK™ 5V or 12V



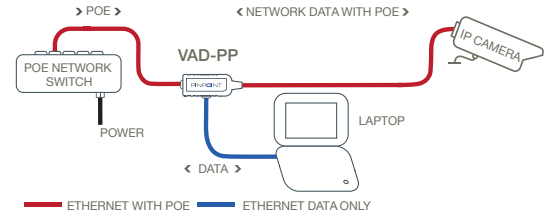
PRODUCT CODES **VOR-OB5  
VOR-OB12**

### OUTBREAK

- POE splitter with 5V or 12V DC output.
- Splits a POE connection into data-only Ethernet and separate 5V or 12V DC connection.
- Allows powering of non-POE devices over a POE network.
- Useful for access control, alarm interfaces, sensors, etc.
- IEEE 802.3af compliant, with 10W output.

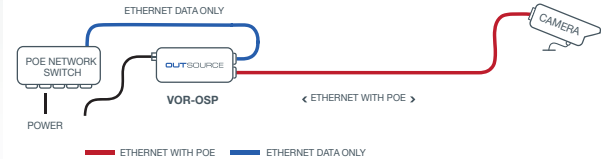
*Unit Size L:124mm W:55mm H:30mm  
Plus Flying DC Lead150mm*

## CAT5/6 | POWERED BY POE PASS THROUGH



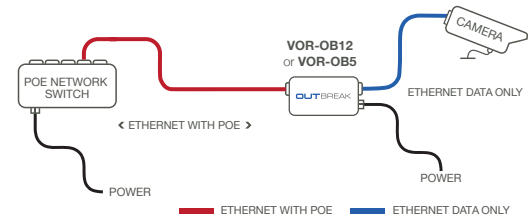
## POWER SOURCE | POE POWERED

## CAT5/6 | 30W POE SOURCE MIDSPAN INJECTOR



## POWER SOURCE | MAINS POWER

## CAT5/6 | POE TO DC SPLITTER



## POWER SOURCE | POE POWERED

## POWER SUPPLY

### 57V 800mA POWER SUPPLY



PRODUCT CODE **VPSU-57V-800**

#### ● 57V 800mA POWER SUPPLY

- 57V DC Power Supply, (40W total budget).
- Input Connector, 2 Pin IEC320, C8 Type (Accepts C7 Type "figure of 8" power cord).
- Output Cable, 1.0m, stripped and tinned.
- Requires a 2 PIN Power Cord (C7) (purchase separately). (Power cord supplied in USA)

*Unit Size L:114.5mm W:50mm H:30.5mm*

## POWER SUPPLY

### 57V 1500mA POWER SUPPLY



PRODUCT CODE **VPSU-57V-1500**

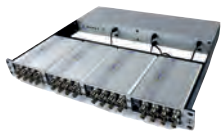
#### ● 57V 1500mA POWER SUPPLY

- 57V DC Power Supply, (78W total budget).
- Input Connector, 2 Pin IEC320, C8 Type (Accepts C7 Type "figure of 8" power cord).
- Output Cable, 1.0m, stripped and tinned.
- Needs a 2 PIN Power Cord (C7) (purchase separately). (Power cord supplied in USA)

*Unit Size L:143mm W:64mm H:36mm*

## 1U RACKMOUNT POWER SUPPLY

### 1 U RACKMOUNT POWER SUPPLY



PRODUCT CODES **VPSU-57V-1U-UK**  
**VPSU-57V-1U-US** **VPSU-57V-1U-EU**

#### ● 57V 1U RACK 8800mA POWER SUPPLY

- Rack mount POE power source in 1U format.
- Mounts with Base units in same 1U for max density - includes microfit cables to Base units.
- Maximum 57V POE voltage for optimum power and distance.
- Integrated overload protection & UL certification.
- Dual units can provide fully redundant power.
- Supplied with UK, EU or EU 3-PIN power cord.

*Unit Size L:442mm W:130mm H:44.5mm*

## 2-PIN POWER CORDS

### 2 PIN POWER CORDS

- 2- PIN C7 Power Cord with UK, US, or EU connector, (2 metre cord).

PRODUCT CODES

**2-PIN-UK**

**2-PIN-US**

**2-PIN-EU**



## ACCESSORIES

### RMPSU LINKING CABLE

- 4 way linking cable for use with VPSU-57V-1500 to allow up to 4 units to be powered from 1 power supply.

PRODUCT CODES **RMPSU-4W**

### PATCH CABLE

- Patch cable for LONGSPAN.

PRODUCT CODE **VLS-LS-PATCH**



## POWER SUPPLY

### VHW RMPSU POWER SUPPLY



PRODUCT CODE **VHW-RMPSU**

#### ● VHW RMPSU 24V POWER SUPPLY

- 24V DC Power Supply.
- Comes with 8 Way linking cable. (for 8x HIGHWIRE, LONGSPAN Lite and HIGHWIRE Longstar Lite units).
- Needs a 2 PIN Power Cord (C7) (purchase separately). (Power cord supplied in USA).

*Unit Size L:114mm W:53mm H:38mm  
(without cables)*

## UNIVERSAL POWER SUPPLY

### 12V UNIVERSAL POWER SUPPLY



PRODUCT CODE **VPSU-12V-U**

#### ● 12V DC UNIVERSAL POWER SUPPLY

- 12V DC plug top (Universal) PSU for single HIGHWIRE unit.
- Output Cable, 1.0m, stripped and tinned.
- Adapters for UK, USA and EU can be fitted to main power unit.

Photo shows each country adapter connected, to the main unit. Box contains one main unit and 3 country specific adapters.

*Unit Size L:90mm W:42mm H:35mm  
(without adapters)*



UK, IRELAND & WORLDWIDE Sales

**Veracity UK Ltd**

Tel: +44 (0)1292 264967  
sales-uk@veracityglobal.com

USA Sales

**Veracity USA Inc**

Tel: 1-800-679-1590  
sales-usa@veracityglobal.com

EUROPE Sales

**Veracity UK Ltd**

Tel: +44 (0)1292 264967  
sales-europe@veracityglobal.com

MIDDLE EAST Sales

**Veracity ME DMCC**

Tel: +971 (0)4 440 8938  
sales-me@veracityglobal.com

INDIA Sales

**iComply Veracity Surveillance Pvt Ltd**

Tel: +91 11 4986 5396  
sales-india@veracityglobal.com

[www.veracityglobal.com](http://www.veracityglobal.com)